

# Simple Free-Energy Devices

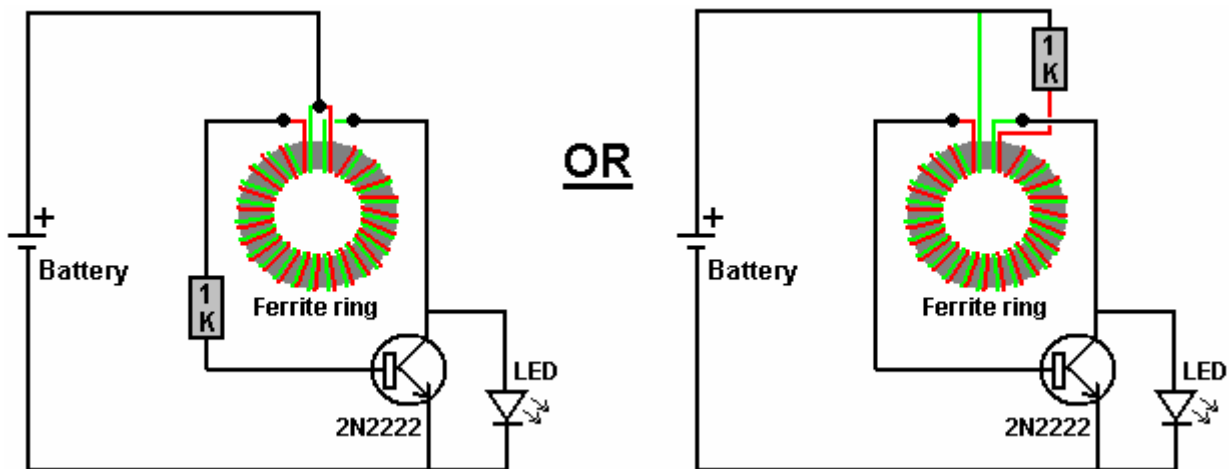
This presentation is mainly for people who have never come across free-energy and know nothing about it. So, each chapter deals with just one device and tries to explain it clearly.

## Chapter 2: The “Joule Thief”

There is nothing magical about free energy. I consider that a “free-energy” device is one which outputs energy without the need for having to buy fuel to power the device. We live in a vast energy field and there are many different ways to access that energy and make it into a form which is useful to us – typically electricity. One of those ways is to pass current through a coil of wire and then suddenly which of the current. When you do that, the coil produces a sudden, very large voltage spike which causes energy to flow into the coil from the outside environment.

For this inflow of energy to be useful, we need it to happen many times per second, and that required an electronic circuit. Electronic circuits are not difficult to understand, nor are they hard to construct, and I will explain as we go along.

Mr. Z. Kaparnik, in the "Ingenuity Unlimited" section of the November 1999 edition of the magazine "Everyday Practical Electronics" showed his clever design which he called the “Joule Thief”. His circuit allows a discharged 1.5-volt dry battery to power a 3-volt LED (“Light Emitting Diode”). His circuit is very simple and very clever and has become enormously popular. This is his circuit:



The battery looks like this:



The 1K resistor looks like this:



The 2N2222 transistor looks like this:

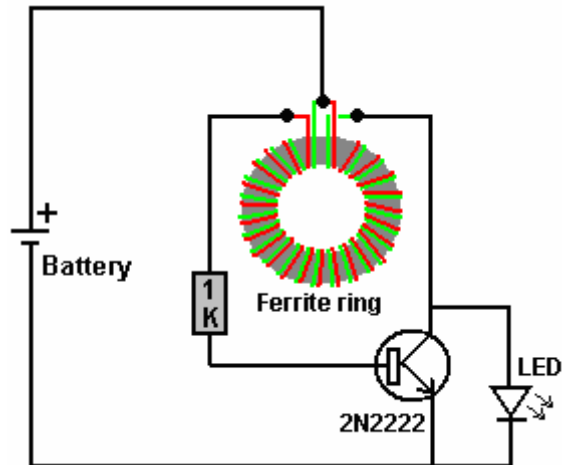
The LED looks like this:



The Ferrite ring looks like this:



The circuit is very simple:

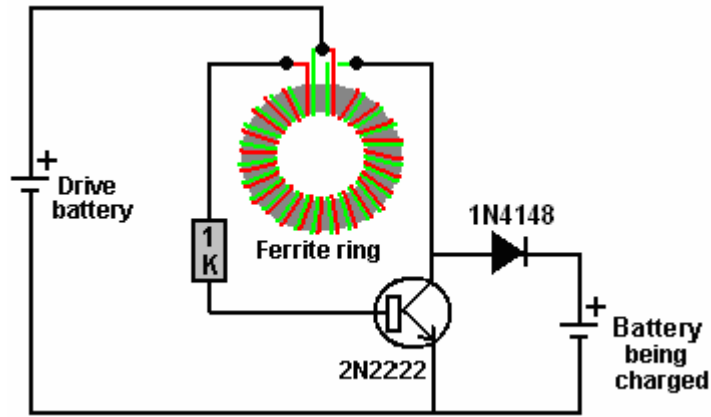


Two short lengths of thin wire (enamelled solid copper wire) are used to wind a few turns around the toroid. This makes two separate coils wound side by side. When the battery is connected, current flows through the red coil, is limited by the 1000 ohm resistor and flows through the transistor back to the battery. This turns the transistor on which drives a pulse of current through the green coil, and that causes a corresponding pulse in the red coil. That process repeats itself, perhaps 200,000 times per second.

Because of the characteristics of any coil, the voltage produced in the green coil when the transistor switches off is very much higher than the voltage of the battery, and well in excess of the 3-volts needed to light the LED. If the battery is only half a volt (and unable to run the original TV remote or whatever) it can still light the 3-volt LED. So, a tiny torch with just one LED as the light source can be powered by a battery which was considered "dead". This is interesting and instructional. You connect the battery and the LED lights up. You disconnect the battery and the LED goes out.

This looks as if the battery is lighting the LED, but in fact, it isn't. What is actually happening is that the battery powers the circuit, causing the green coil to produce high voltage spikes, and those spikes cause energy to flow into the circuit from outside, lighting the LED (which the battery just can't do).

This very simple circuit is causing the environment to supply free power to you and that is very impressive! The circuit can be constructed using an ordinary strip of screw blocks. However, we can use that incoming energy for other things. For example, we could use it to recharge a rechargeable battery:

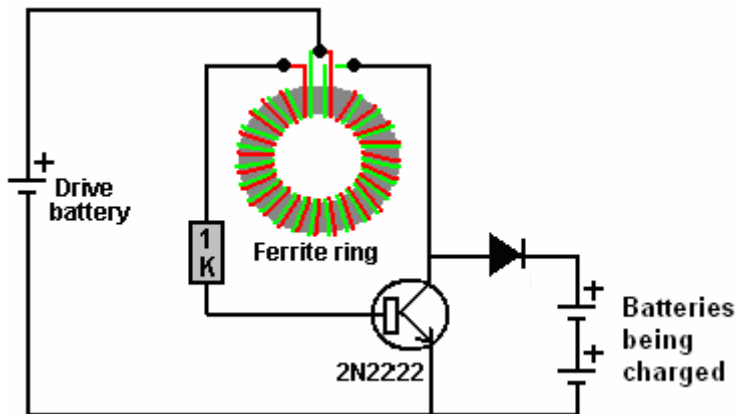


In this arrangement the LED is replaced by an ordinary diode (almost any diode will do) and the incoming power fed into a rechargeable battery. I have used this circuit to recharge a 2285 milliamp-hour AA size battery from 0.6 volts to 1.41 volts in one hour without running the drive battery down by any significant amount.

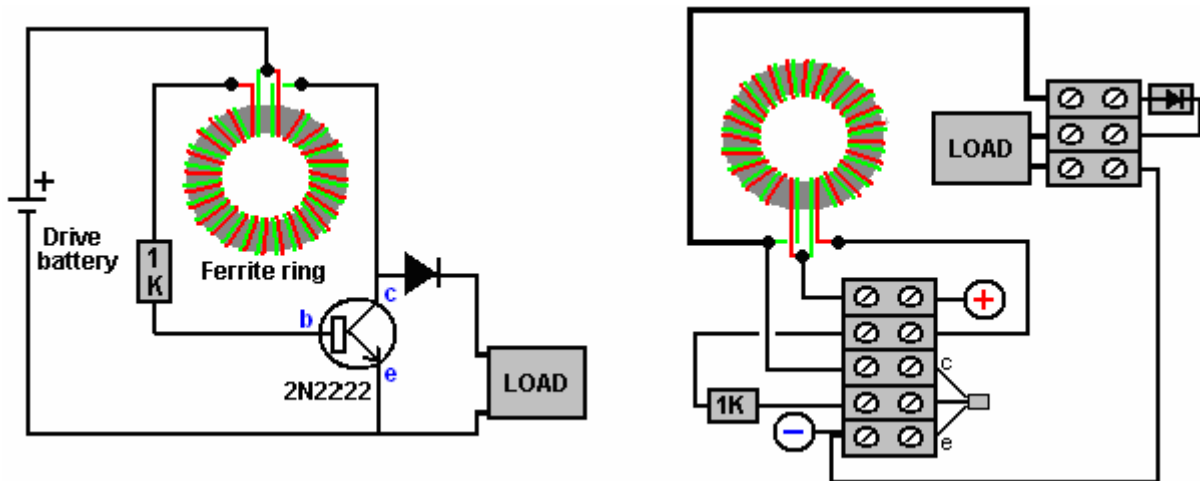


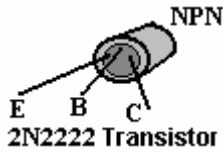
A 1N4148 diode looks like this:

However, the big gains are when two or more batteries are charged at the same time:



Two NiMh rechargeable batteries have less voltage than a 3-volt LED, so obviously, if the circuit can light a 3V LED it can definitely recharge two NiMh batteries.





The transistor connections are like this:

Mr Kaparnik used a tiny ferrite ring out of an old Mains LED light bulb, but it is not necessary to have a ring at all. I have used a cylinder of paper instead and it works very well. The coil can be wound quite easily. A pencil makes a good former for a coil, so cut a strip of paper 150 millimeters wide and wrap it around the pencil to form a paper cylinder several layers thick and 150 millimeters wide and seal it with Selotape:



Make sure that when you pull the paper cylinder together with the Selotape, that you don't stick the paper to the pencil as we will want to slide the completed cylinder off the pencil after we wind the coil on it. The coil can now be wound on the paper cylinder, and for this, it is convenient to use two fifty gram reels of enamelled copper wire. The wire which I used is 0.375 millimeters in diameter. There are many different ways to wind a coil. The method I use is to leave at least 150mm of spare wire at the beginning so that the coil can be connected when wound, then make three or four turns like this:



Then hold those turns in place with Selotape before winding the rest of the coil. Finally, the right hand end of the coil is secured with Selotape and then both ends are covered with electrical tape as Selotape deteriorates with time. While this coil has been wound with only one layer, if you want, an extra single covering of paper can be used to cover the first layer and a second layer wound on top of it before being taped and slid off the pencil.

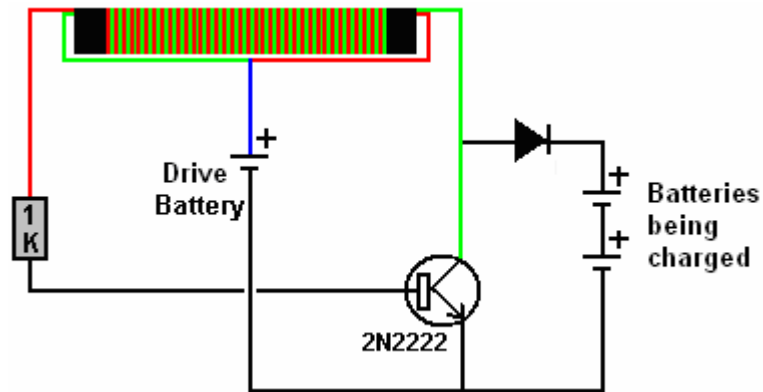
While the diagrams above show the strands of wire in two colours, the reality is that both wires will be the same colour and so you end up with a coil which has two identical looking wires coming out of each end. You make the wires at each end more than the length of the coil so that you have enough connecting wire to make the final connections. Use a multimeter (or battery and LED) to identify a wire at each end which connects all the way through the coil and then connect one end of that wire to the other wire at the other end. That makes the central tap of the coil "B":



The coil needs to be checked carefully before use. Ideally, the joint is soldered and if the enamelled copper wire used is the "solderable" type (which is the most common type) then the soldering iron heat will burn the enamel away after a few seconds, making a good joint on what used to be fully enamelled

wires. A resistance test needs to be carried out to check the quality of the coil. First, check the DC resistance between points "A" and "B". The result should be less than 2 ohms. Then check the resistance between points "B" and "C" and that should be an exactly matching resistance value. Finally, check the resistance between points "A" and "C" and that value will be more than the "A" to "B" resistance but never seems to be twice. If it isn't more, then the joint is not properly made and needs to be heated up with the soldering iron and possibly more solder used on it and the resistance measurements made again.

The simple circuit as shown can charge four AA batteries in series when the circuit is driven by just one AA battery.



I have used a 1N4148 diode which is a silicon diode with a voltage drop across it of 0.65 or 0.7 volts and it has worked well. However, a germanium diode with its much lower 0.25 to 0.3 voltage drop is generally recommended, perhaps a 1N34A diode. It is also suggested that using two or three diodes in parallel is helpful.

This simple Joule Thief circuit can be used with a little ingenuity, to power the lamps of chapter 1 without the need for a solar panel, but that is for a later chapter.

Patrick J Kelly  
[www.free-energy-info.com](http://www.free-energy-info.com)